

---

## **Appendices**

---



**Appendix-1.1**  
**(Reference to paragraph 1.6 page 3)**

**Department-wise break-up of outstanding Inspection Reports and Paragraphs**

Department	Number of IRs/Paragraphs pending as of 30 September 2013	
	IRs	Paragraphs
Backward Classes Welfare	119	777
Consumer Affairs, Food and Civil Supplies	255	871
Finance	14	64
General Administration	105	383
Health, Medical and Family Welfare	849	6461
Higher Education	1314	7904
Home	335	1610
Housing	21	167
Labour, Employment, Training and Factories	449	1572
Law	317	954
Minorities Welfare	35	124
Municipal Administration and Urban Development	367	4862
Panchayat Raj and Rural Development	749	6233
Planning	61	268
Revenue	137	1032
School Education	348	3392
Social Welfare	207	1969
Tribal Welfare	207	1845
Women, Child, Disabled and Senior Citizens	540	2076
Youth Advancement, Tourism and Culture	203	1015
<b>Total</b>	<b>6632</b>	<b>43579</b>

**Appendix-1.2**

(Reference to paragraph 1.6 page 4)

**Position of Pending Explanatory Notes as of January 2014**

<b>Department</b>	<b>2005-06</b>	<b>2006-07</b>	<b>2008-09</b>	<b>2009-10</b>	<b>2010-11</b>	<b>2011-12 (G&amp;SSA)</b>	<b>Total</b>
Backward Classes Welfare	-	-	-	-	-	1	<b>1</b>
Finance*	-	-	-	1*	-	1	<b>2</b>
Higher Education	-	-	-	-	-	2	<b>2</b>
Home*	-	1*	-	-	-	1	<b>2</b>
Minorities Welfare	-	-	-	-	-	1	<b>1</b>
Municipal Administration and Urban Development (Municipal Administration Wing)	-	-	-	-	-	1	<b>1</b>
Rural Water Supply and Sanitation	-	-	-	-	-	1	<b>1</b>
Social Welfare	-	-	-	-	-	1	<b>1</b>
Tribal Welfare	-	-	-	-	1	1	<b>2</b>
Youth Advancement, Tourism and Culture	1	1	2	1	1	2	<b>8</b>
<b>Total</b>	<b>1</b>	<b>2</b>	<b>2</b>	<b>2</b>	<b>2</b>	<b>12</b>	<b>21</b>

*\* pertaining to the audit paragraphs that featured in the Audit Report on Revenue Receipts*

**Appendix-2.1**  
**(Reference to paragraph 2.3.3.1 page 18)**

**List of sampled units**

Sl. No.	District	Name of the unit	Sl. No.	District	Name of the unit	
1	Anantapur	Anantapur MC	55	Nalgonda	Anumala	
2		Bukkarayasamudram	56		Atmakur (S)	
3		C K Palli	57		Chotuppal	
4		Dharmavaram MC	58		Devarakonda	
5		Gorantla	59		Kattangur	
6		Gorladinne	60		Kodad	
7		Hindupur Rural	61		Miryalaguda	
8		Kudair	62		Nalgonda	
9		Madakasira	63		Nalgonda MC	
10		Nallamada	64		Nallacheruvu	
11		Narpala	65		Nidamanoor	
12		O D Cheruvu	66		Nuthankal	
13		Parigi	67		Thipparthi	
14		Penukonda	68		Thungathurthy	
15		Putlur	69		Valigonda	
16		Rapthadu	70		Yadagirigutta	
17		Somendepalli	71		Ranga Reddy	Basheerabad
18		Tanakallu	72			Kulkacherla
19	Chittoor	Bangarupalem	73	L. B. Nagar MC		
20		Chittoor MC	74	Malkajiri MC		
21		G.D. Nellore	75	Mominpet		
22		Irala	76	Shamshabad		
23		Karvetinagaram	77	SPS Nellore	Allur	
24		Kuppam	78		Buchireddipalem	
25		Madanapalli	79		Chillakuru	
26		P T Samudram	80		Duttaluru	
27		Pakala	81		Gudur	
28		Pileru	82		Indukurupet	
29		Punganuru	83		Kavali	
30		Puthalapattu	84		Nellore MC	
31	Ramakuppam	85	Podalakuru			
32	Satyavedu	86	Sullurupeta			
33	Srikalahasthi	87	Sydapuram			
34	Thavanampalli	88	Venkatachalam			
35	Tirupati MC	89	Vidavalur			
36	Venkatagirikota	90	Srikakulam	Kaviti		
37	Yerpedu	91		Kotabommali		
38	Mahbubnagar	Amrabad		92	Kothuru	
39		Bijnepalli		93	Laveru	
40		Dhanwada		94	Mandasa	
41		Dharur		95	Polaki	
42		Farooknagaar		96	Ponduru	
43		Ghattu		97	Santakaviti	
44		Iza		98	Seethampeta	
45		Jadcherla		99	Srikakulam MC	
46		Koilkonda	100	Vangara		
47		Kollapur	101	Visakhapatnam	Chintapalli	
48	Kothakota	102	G.K. Veedhi			
49	Mahbubnagar	103	Koyyuru			
50	Mahbubnagar MC					
51	Makthal					
52	Narayanpet					
53	Pangal					
54	Veepanagandla					

**Appendix-2.2**  
(Reference to paragraph 2.3.3.1 page 18)

**Category-wise details of pensioners contacted/interacted with**

Name of the District	OAP	WP	DP	TT	Weavers	AH	Non-pensioners	Total
Anantapur	542	297	176	1	73	32	-	1121
Chittoor	478	401	171	8	0	72	-	1130
Mahbubnagar	479	316	106	3	49	24	-	977
Nalgonda	439	244	131	30	35	46	-	925
Ranga Reddy	313	182	90	0	0	19	43	647
SPS Nellore	370	280	194	3	22	53	29	951
Srikakulam	168	135	180	0	29	151	-	663
Visakhapatnam	98	38	15	0	0	7	-	158
<b>Total</b>	<b>2887</b>	<b>1893</b>	<b>1063</b>	<b>45</b>	<b>208</b>	<b>404</b>	<b>72</b>	<b>6572</b>

*OAP: Old Age Pension, WP: Widow Pension, DP: Pension to persons with disability, TT: Toddy Tappers and AH: Dr. YSR Abhaya Hastham scheme*

**Appendix-2.3**  
(Reference to paragraph 2.5.1 page 21)

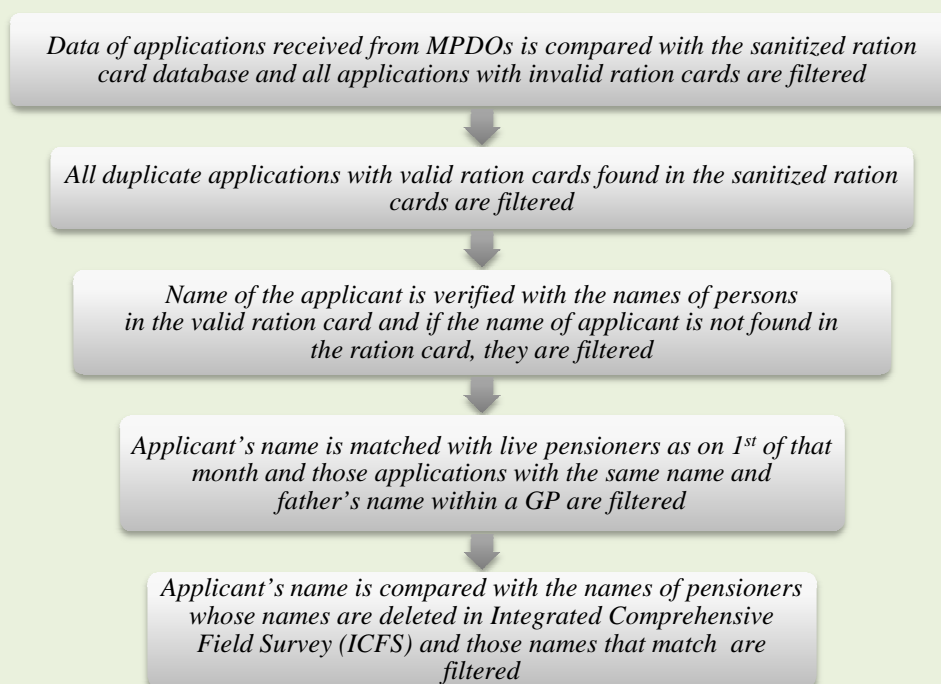
**Sanctioning procedure**

Stages in sanction	Designated Authority	Remarks
<b>Submission of application</b>	Panchayat Secretary (PS)/Mandal Parishad Development Officer (MPDO)/Municipal Commissioner (MC)	Applications are also accepted during various public interactions like 'Rachabanda' etc.
<b>Initial scrutiny</b>	Panchayat Secretary/Bill Collector (BC)	PS/BC should verify locally in the village/ward the details furnished by applicants like age, status of death of spouse and cases of re-marriage (in case of widow pensions).
<b>Approval of lists of Identified Beneficiaries</b>	IIMC <sup>1</sup> /Gram Sabha/Ward Sabha (Rural/Urban areas)	<b>IIMC:</b> During the implementation of INDIRAMMA programme (2006-09) <b>2009-10 onwards:</b> Gram Sabha/Ward Sabha
<b>Transmission of approved lists along with applications and their enclosures (dockets)</b>	To MPDO by PS To MC by Bill Collectors	Scrutinise the details of applicants in the light of verification reports submitted by PS/BC and determine the eligibility and upload the details thereof in the website of SERP.
<b>Sanction of pension</b>	SERP	Data validation (five-step validation of applications) - awarded to a private agency – is being done with reference to the data of ration cards obtained from Civil Supplies Department.
<b>Communication of results</b>	MPDO/MC	System-generated sanction orders are issued by MPDO/MC to the PDAs for disbursement of pension to the sanctioned beneficiaries.

<sup>1</sup> INDIRAMMA Implementation Monitoring Committee

**Appendix-2.4**  
(Reference to paragraph 2.5.1 page 21)

**Five-step validation process**



**Appendix-2.5**  
(Reference to paragraph 2.5.1 page 21)

**Results of Audit scrutiny of records/applications in 103 sampled units**

Category	Non-compliance with prescribed procedure	Number of Units
<b>Sanction of pension</b>	Non-maintenance of Part-A and Part-B registers/non-recording receipt of applications date-wise	84
	Absence of mechanism to inform applicants about its status (sanction and/or rejection)	89
	Non-conducting Gram Sabhas to select eligible individuals	22
	Absence of endorsement/orders of MPDO/MC for processing or rejecting the applications	29
	Sanction and disbursement of pensions to individuals who did not have ration cards	97
	Old age pensions without proof of age	23
	Widow pensions without death certificate of spouses	50
	Sanction of pension to pink ration card holders (APL families)	12
	Males receiving widow pensions	5
<b>Incomplete applications/deficiencies in applications</b>	Applications were not dated	31
	Applications were not signed by applicants	30
	Photographs were not affixed	10
	Consideration of documents other than ration cards	12
	Sanction of pension without the support of ration cards	30
	Deficient/non-scrutiny of applications by Panchayat Secretary	13
	Absence of recommendation of Panchayat Secretary/Village Revenue Officer	26

**Appendix-2.6**  
**(Reference to paragraph 2.5.3.1 page 23)**

**Comparative picture with regard to disbursement of pension**

Manual	Smart Card	Department of Posts
<p><b>SERP</b></p> <ul style="list-style-type: none"> <li>Releases funds to DRDAs</li> </ul> <p><b>DRDAs</b></p> <ul style="list-style-type: none"> <li>Credit funds into the accounts of MPDOs and MCs and transfers the current month's data of pensioners</li> <li>Retain undisbursed funds for utilisation towards disbursement of pensions in subsequent months</li> </ul> <p><b>MPDOs</b></p> <ul style="list-style-type: none"> <li>Issue cheques and acquittances to PSs/VOs/VROs/BCs at Gram Panchayat level/in Municipalities</li> <li>Refund the undisbursed amount to DRDAs through demand drafts</li> </ul> <p><b>PSs/VOs/VROs/BCs</b></p> <ul style="list-style-type: none"> <li>Disburse pension to beneficiaries in villages/municipalities</li> <li>Refund undisbursed cash and paid acquittances to MPDOs/MCs</li> </ul>	<p><b>SERP</b></p> <ul style="list-style-type: none"> <li>Releases funds to identified banks by obtaining approval of DRDA</li> <li>Transfers pensioners data to MPDOs and to Banks</li> </ul> <p><b>MPDOs</b></p> <ul style="list-style-type: none"> <li>Print two sets of acquittances and hand them over to Mandal Coordinator<sup>2</sup></li> <li>Scrutinise paid acquittances and give online confirmation to SERP about the undisbursed funds</li> </ul> <p><b>Banks</b></p> <ul style="list-style-type: none"> <li>Transfer funds into the accounts of Mandal Coordinator</li> <li>Credit the pension amount to individual bank accounts of pensioners</li> <li>Consolidate the details and arrive at the undisbursed funds (category-wise) and transfer the data to MPDO for confirmation who in turn transfers the data to DRDA</li> <li>Transfer undisbursed funds to SERP</li> </ul> <p><b>Mandal Coordinators</b></p> <ul style="list-style-type: none"> <li>Draw funds and pass on to CSPs along with GP-wise acquittances</li> <li>Submit one set of paid acquittance to MPDO</li> <li>Return second set of acquittance and undisbursed cash to Bank</li> </ul> <p><b>CSPs</b></p> <ul style="list-style-type: none"> <li>Disburse pension to beneficiaries in villages through PoS devices with the help of smart card and finger prints</li> <li>Refund undisbursed cash and paid acquittances to Mandal Coordinator</li> </ul>	<p><b>SERP</b></p> <ul style="list-style-type: none"> <li>Releases funds to HO (district level)</li> <li>Transfers pensioners data to MPDOs</li> </ul> <p><b>MPDOs</b></p> <ul style="list-style-type: none"> <li>Print two sets of acquittances and hand them over to SO/BO/ CSP</li> </ul> <p><b>HO</b></p> <ul style="list-style-type: none"> <li>Transfers funds to the accounts of SO/BO</li> <li>Credit funds to individual accounts of pensioners</li> <li>Arrives at the undisbursed funds (category-wise) and transfers undisbursed funds to SERP</li> </ul> <p><b>CSPs</b></p> <ul style="list-style-type: none"> <li>Draw funds and disburses pension to beneficiaries in villages through PoT devices with the help of smart card and finger prints</li> <li>Refund undisbursed cash and paid acquittances to SO/BO</li> </ul> <p><b>SOs/BOs</b></p> <ul style="list-style-type: none"> <li>Draw funds and disburses pension to beneficiaries in villages through PoT devices with the help of smart card and finger prints</li> <li>Refund undisbursed cash and paid acquittances to HO</li> <li>Submit one set of paid acquittance to MPDO</li> <li>Return second set of acquittance and undisbursed cash to HO</li> </ul>

<sup>2</sup> Authorised to undertake transactions on behalf of Bank



**Appendix-4.1**  
(Reference to paragraph 4.2.3.1 page 61)

**Details of Audit Sample**

District	Number of MLS Points visited	Names of MLS Points visited	Number of Godowns visited
Adilabad	2	Nirmal	four
		Jainadh	two
Anantapur	2	Hindupur	Multiple Godowns
		Kadiri	Multiple Godowns
East Godavari	2	Gollaprolu	two
		Pithapuram	one
Guntur	2	Vinukonda	Multiple Godowns
		Piduguralla	Multiple Godowns
Karimnagar	2	Mahadevpur	one
		Dharmapuri	one
Ranga Reddy	2	Hafeezpet	one
		Ghatkesar	one
Visakhapatnam	2	Narsipatnam	two
		Chinthapalli (GCC)	two
YSR Kadapa	2	Kamalapuram	one
		Muddanuru	two (including one old cinema theatre)

**Appendix-4.2**  
(Reference to paragraph 4.5.1 page 63)

**Process involved in procurement of paddy every season**

Activity	Responsibility
Fixation of target for paddy procurement	Commissioner of Civil Supplies
Opening of Paddy Purchase Centres (PPCs)	District Administration
Arrangement with agencies like Self Help Groups (SHGs) of Indira Kranthi Patham, Primary Agricultural Cooperative Societies (PACS) for operating additional PPCs	District Administration
Procurement and positioning of gunnies in PPCs	AP State Civil Supplies Corporation
Identification of farmers	Village Revenue Officers (VROs)
Payment to farmers	AP State Civil Supplies Corporation (through DRDAs)
Tagging Rice Mills to PPCs	District Administration
Entering into Transport Agreements	AP State Civil Supplies Corporation & District Administration
Intermediate storage and its insurance	AP State Civil Supplies Corporation
Transporting paddy to Millers within eight km radius, for custom milling within 48 hours after procurement	AP State Civil Supplies Corporation
Delivery of custom milled rice by Millers to FCI within 15 days of receipt of paddy	Millers (APSCSC to monitor and ensure)
Reconciliation of paddy procured, transported to millers and rice delivered to FCI	AP State Civil Supplies Corporation
Follow-up and Receipt of payments from FCI	AP State Civil Supplies Corporation

**Appendix-4.3**  
(Reference to paragraph 4.5.1 page 63)

**District-wise paddy procurement from Kharif Marketing Season (KMS)  
2008-09 to 2012-13 (up to May 2013)**

(Quantity in MT)

District	KMS 2008-09	KMS 2009-10	KMS 2010-11	KMS 2011-12	KMS 2012-13	Grand Total
Srikakulam	0	0	0	160	18515	18675
Vizianagaram	0	0	0	0	--	0
Visakhapatnam	0	0	0	0	--	0
East Godavari	0	0	6919	5351	1451	13721
West Godavari	6287	1323	165452	13428	7463	193953
Krishna	91	0	31787	23600	8314	63792
Guntur	0	86	5822	6809	--	12717
Prakasam	5865	2980	10591	14414	--	33850
SPS Nellore	0	0	2540	157392	2001	161933
Chittoor	0	0	0	2088	94	2182
Anantapur	2422	3687	13424	81	--	19614
YSR Kadapa	0	0	0	4848	--	4848
Kurnool	0	2931	11647	6949	--	21527
Adilabad	38274	2760	77799	100875	83005	302713
Nizamabad	39607	18345	180999	292037	122605	653593
Medak	36506	7660	96996	64430	31683	237275
Karimnagar	515310	28226	707069	873136	704264	2828005
Warangal	51175	9354	222661	169258	189239	641687
Khammam	16086	2815	53012	54581	51706	178200
Nalgonda	221076	131135	387818	176608	121479	1038116
Mahbubnagar	25791	85879	132330	36745	21080	301825
Ranga Reddy	5394	6954	23947	16074	7156	59525
<b>Total</b>	<b>963884</b>	<b>304135</b>	<b>2130813</b>	<b>2018864</b>	<b>1370055</b>	<b>6787751</b>

**Appendix-4.4**  
(Reference to paragraph 4.6.6.1 page 75)

**Year-wise details of stocks moved and additional expenditure incurred on transportation**

(₹ in crore)

Period	Quantity moved (MT)	Expenditure on Stage-I transportation	Avoidable extra expenditure
2008-09	2842479	49.18	7.49
2009-10	3385918	62.25	9.24
2010-11	3473002	65.48	10.62
2011-12	2509698	55.67	10.44
<b>Total</b>		<b>232.58</b>	<b>37.79</b>

*Figures for 2012-13 are not available due to non-finalisation of accounts of APSCSC for the year*

**Appendix-4.5**  
**(Reference to paragraph 4.6.7 page 75)**

**Percentage of space in own godowns to total available space**

Sl. No.	District	No. of MLS Points	Available storage capacity of the godowns (in MT)			Percentage of space in own godowns to total storage space
			Own	Private	Total Space	
1	Srikakulam	29	200	35030	35230	1
2	Vizianagaram	15	2400	27930	30330	8
3	Visakhapatnam	30	9300	16050	25350	37
4	East Godavari	20	4000	27209	31209	13
5	West Godavari	13	20000	30216	50216	40
6	Krishna	17	900	28650	29550	3
7	Guntur	19	5900	71425	77325	8
8	Prakasam	19	500	40050	40550	1
9	SPS Nellore	15	5200	44800	50000	10
10	Chittoor	28	3000	34800	37800	8
11	YSR Kadapa	19	7800	19715	27515	28
12	Anantapur	24	4900	34290	39190	13
13	Kurnool	17	5300	21200	26500	20
14	Mahbubnagar	24	2000	26920	28920	7
15	Nalgonda	17	3000	53800	56800	5
16	Khammam	17	1400	34730	36130	4
17	Warangal	18	5750	142668	148418	4
18	Karimnagar	16	NIL	135870	135870	0
19	Adilabad	20	1400	14500	15900	9
20	Nizamabad	16	NIL	25446	25446	0
21	Medak	19	12900	44200	57100	23
22	Ranga Reddy	18	12050	21850	33900	36
23	Hyderabad	9	4132	12641	16773	25
<b>Total</b>		<b>439</b>	<b>112032</b>	<b>943990</b>	<b>1056022</b>	<b>11</b>

**Appendix-5.1**  
**(Reference to paragraph 5.1 page 83)**

**Details of test checked schools in six sampled districts**

<b>Ranga Reddy</b>	22. HS, Pathamolgara	<b>Medak</b>
1. ZPHS, Ramanthpur	23. KGBV, Bhootpur	1. ZPHS, Kollur
2. ZPHS, Mallapur	<b>YSR Kadapa</b>	2. ZPHS, RC Puram
3. ZPHS, Dandu Mailaram	1. ZPHS, Kamalkur	3. ZPHS, Nizampur
4. ZPHS, Kongara Kalan	2. ZPHS, Dattapuram	4. ZPHS, Konapur
5. ZPHS, Raviryal	3. ZPHS (Urdu), Muslimkota	5. ZPHS, Kongode
6. ZPHS, Ameerpet	4. ZPHS, Someswarapuram	6. ZPHS, Rangampet
7. ZPHS, Kolkonda	5. ZPHS, T Koduru	7. ZPHS, Gurrallagondi
8. ZPHS, Gottigakhurd	6. ZPHS, Nagireddypalli	8. ZPHS, Jakkapur
9. ZPHS, Damarchedu	7. ZPHS, Pothapi	9. ZPHS, Rajpally
10. ZPHS, Velchal	8. ZPHS, C. Kothapet	10. ZPHS, Rajpet
11. PS, Swaroonnagar	9. ZPHS, Appannapalli	11. PS, SN Colony
12. PS, Gandhinagar	10. ZPHS, Siddavaram	12. UPS, Bandalaguda
13. PS, Indiranagar	11. PS, Valasapalem	13. PS, Veltur
14. UPS, Chilkanagar	12. UPS, Muthkur	14. UPS, Pottipalli
15. ZPHS, Kothapet	13. PS, Nagasanipalli	15. PS, Sangaigudi L/T
16. ZPHS, Habsiguda	14. UPS, Tripuravaram	16. UPS, Nagapur
17. PS, Engalguda	15. PS, Adapur	17. PS, Pothireddypalli
18. PS, Chinthapalliguda	16. UPS(U/M), Nandalur	18. UPS, Pythara
19. UPS, Kappapahad	17. PS, Kottalapalli	19. PS, Therissanagar
20. UPS, Tulekalan	18. UPS, Krishnampalli	20. UPS, Kistapur
21. ZPHS, Polkampalli	19. PS, K. Ramireddypalli	<b>Prakasam</b>
22. PS, Mohabbatnagar	20. UPS, Yenamalachintala	1. ZPHS, Duddukuru
23. PS, Nagireddypalli	21. MSUPS, Mochampet	2. ZPHS, Inkollu
24. UPS, Mansanpalli	22. KGBV, Khazipet	3. ZPHS, Darimadugu,
25. UPS, Manikyammaguda	<b>Vizianagaram</b>	4. ZPHS, Markapur(Girls)
26. ZPHS(G), Maheswaram	1. ZPHS Vasantha, Gantyaada	5. ZPHS, Pandillapalli
27. PS, Burugupalli	2. ZPHS PSR Puram, Gantyaada	6. ZPHS, Bestavarapeta
28. PS, Durgamcheru	3. ZPHS Sompuram, Vepada	7. ZPHS, Tarlupadu
29. UPS, Rallagudapalli	4. ZPHS Vavilapadu, Vepada	8. ZPHS, Tadivaripalli
30. UPS, Enkathala	5. ZPHS Baguvalasa, Salur	9. ZPHS, Laxminarasapuram
31. ZPHS, Tekulapalli	6. ZPHSKhangadi-veedhi, Salur	10. ZPHS, Chilamkur
<b>Mahbubnagar</b>	7. ZPHS Madalangi, Komarada	11. PS, Ondutla
1. ZPHS, Vithalapur, MBNR	8. ZPHS Kotipam, Komarada	12. UPS, Inimerla
2. ZPHS, Wattem	9. ZPHS Kotyada, L.Kota	13. PS, Inkollu
3. ZPHS, Ayyavaripalle	10. ZPHS K.P. Rega, L. Kota	14. ZPHS, Maddalakatta
4. ZPHS, Bijinepally	11. MPPS, Gantyaada	15. ZPHS, Kallur
5. ZPHS, Nasurallabad	12. MPPS, Ginjeru	16. ZPHS, Nandana Vanam
6. ZPHS, Gangapur	13. MPUPS, Narava	17. MADARSA-e-Deniya
7. ZPHS, Thatikonda	14. ZPHS, Bonangi	18. KGBV, Kothapatnam
8. ZPHS, Elikicherla	15. MPPS, Sompuram	19. UPS, Nagellamudupu
9. ZPHS, Boinpally	16. MPPS, PKR Puram	20. PS, Bodawada
10. ZPHS, Khaytanpalli	17. ZPHS, NKR Puram	21. UPS, Gollapalem
11. PS, Koduparthy	18. MPUPS, Nallabilli kasipathiraju	22. PS, Ganugapenta
12. UPS, Alwanpally	19. TWAHS, KG Pudi	23. UPS, Kondepalli
13. PS, Thummalakunta	20. MPPS, L.Kota I	24. PS, Mannemvari Palle
14. KGBV, Jadcherla	21. ZPHS, Gangubudi	25. UPS, Mokshagundam
15. HS, Kodgal	22. MPPS, Tamarapalle	26. ZPHS, Jammulapalem
16. HS (HW), Badepally	23. KGBV, Vepada	27. ZPHS, Chandavaram
17. RSTC, Gollapalli	24. KGBV, Gantyaada	28. ZPHS, Gollapalli
18. PS, Ekulagutta thanda	25. KGBV, L.Kota	29. ZPHS, Kottayeruvanipalli
19. PS, Sheripally	26. ZPHS, Ajjada	30. UPS, Ekalavya Colony, Markapur
20. UPS, Bhootpur (U/M)	27. ZPHS, Hammirajupeta	
21. UPS, Ippalapalli	28. TWAUPS, Tatipudi	

**Appendix-5.2**  
(Reference to paragraphs 5.1.1 and 5.1.2 pages 84 and 86)

**Status of schools running without buildings**

Name of the district	Type of school	No. of schools	Number of schools				
			without buildings	with single room	with two rooms	with three rooms	more than three rooms
Prakasam	PS	2775	8	914	1135	400	310
	UPS	404	0	3	31	83	286
	HS	382	0	3	12	70	295
Vizianagaram	PS	2294	78	934	668	245	321
	UPS	252	0	4	9	30	190
	HS	314	0	5	20	59	202
YSR Kadapa	PS	2843	30	980	1213	277	331
	UPS	301	1	1	18	61	219
	HS	384	4	2	15	83	279
Ranga Reddy	PS	1684	33	353	405	284	597
	UPS	265	1	2	2	26	234
	HS	477	1	9	24	108	333
Mahbubnagar	PS	2725	7	923	650	422	698
	UPS	586	0	4	19	54	505
	HS	646	1	16	49	162	406
Medak	PS	2016	22	515	479	365	626
	UPS	445	1	9	21	48	365
	HS	564	1	19	38	176	326
<b>Total</b>		<b>19357</b>	<b>188</b>	<b>4696</b>	<b>4808</b>	<b>2953</b>	<b>6523</b>

**Appendix-5.3**  
(Reference to paragraphs 5.1.4, 5.1.5, 5.1.7 and 5.1.8 pages 87 to 89)

**Status of basic amenities in schools in sampled districts**

District	Category of schools	No. of schools	Schools without facilities					
			Drinking Water	Play ground	Compound wall (pucca)	Provision of toilets		
						Girls	Boys	Common
Mahbubnagar	PS	2725	1532	1706	2166	1481	2299	1455
	UPS	586	249	320	378	205	450	275
	HS	646	227	198	373	224	504	359
Medak	PS	2016	1008	1211	1404	944	1551	949
	UPS	445	171	225	254	136	290	179
	HS	564	137	172	309	132	405	247
Vizianagaram	PS	2294	747	1261	1806	1020	1678	1175
	UPS	252	57	90	184	56	148	67
	HS	314	41	60	214	48	207	129
Prakasam	PS	2775	1232	1283	2281	431	1216	1002
	UPS	404	132	146	295	35	180	132
	HS	382	97	67	267	35	244	176
YSR Kadapa	PS	2843	948	2102	1946	1192	2037	724
	UPS	301	69	190	179	76	182	75
	HS	384	60	95	226	66	246	175
Ranga Reddy	PS	1684	793	887	1083	975	1230	1231
	UPS	265	81	105	127	96	149	163
	HS	477	154	144	250	168	336	332
<b>Total</b>		<b>19357</b>	<b>7735</b>	<b>10262</b>	<b>13742</b>	<b>7320</b>	<b>13352</b>	<b>8845</b>

**Appendix-5.4**  
(Reference to paragraph 5.1.9 page 89)

**Details of availability of Library and Library books in schools of sampled districts**

District	Category of schools	Schools having Library			Schools having Library books		
		Required	Available	Shortage	Required	Available	Shortage
Mahbubnagar	PS	2725	2508	217	2725	2593	132
	UPS	586	549	37	586	575	11
	HS	646	540	106	646	568	78
Medak	PS	2016	1690	326	2016	1882	134
	UPS	445	389	56	445	427	18
	HS	564	491	73	564	523	41
Vizianagaram	PS	2294	2187	107	2294	2226	68
	UPS	252	248	4	252	247	5
	HS	314	278	36	314	294	20
Prakasam	PS	2775	2718	57	2775	2739	36
	UPS	404	398	6	404	395	9
	HS	382	366	16	382	374	8
YSR Kadapa	PS	2843	2555	288	2843	2787	56
	UPS	301	280	21	301	297	4
	HS	384	331	53	384	363	21
Ranga Reddy	PS	1684	1616	68	1684	1634	50
	UPS	265	255	10	265	260	5
	HS	477	446	31	477	456	21
<b>Total</b>		<b>19357</b>	<b>17845</b>	<b>1512</b>	<b>19357</b>	<b>18640</b>	<b>717</b>

**Appendix-5.5**  
(Reference to paragraph 5.7 page 103)

**Details of payment of monthly hire charges for vehicles**

Sl. No.	Department	Total number of vouchers	Possible fraudulent claims			Hiring of vehicles not registered as taxi		
			No of vehicles	Vouchers	Amount (₹)	No of vehicles	Vouchers	Amount (₹)
1	Agriculture	1	-	-	-	-	-	-
2	Animal Husbandry and Fisheries (Fisheries)	2	-	-	-	-	-	-
3	Finance	62	3	2	67600	9	9	289251
4	General Administration	105	1	1	36000	51	34	1521200
5	Home (Police)	6	2	1	36000	-	-	-
6	Industries and Commerce	1	1	1	34000	-	-	-
7	Law	1	-	-	-	-	-	-
8	Medical and Public Health	61	1	1	36000	10	10	351000
9	Panchayat Raj and Rural Development (Panchayat Raj wing)	2	-	-	-	-	-	-
10	Revenue	448	64	49	1756929	353	210	9711219
11	School Education	1	21	1	86000	15	-	19400
12	Transport, Roads and Buildings	176	7	7	119000	-	-	-
<b>Total</b>		<b>866</b>	<b>100</b>	<b>63</b>	<b>2171529</b>	<b>438</b>	<b>263</b>	<b>11892070</b>