

O/o Pri. Accountant General (A&E)
AP & Telangana, Hyderabad
27-MAR-17



468805

**GOVERNMENT OF ANDHRAPRADESH
ABSTRACT**

PENSIONS - Dearness Relief to Pensioners - Revision of Dearness Relief with effect from 01.01.2016 - Orders - Issued.

FINANCE (HR-5-Pension, GPF) DEPARTMENT

G.O.MS.No. 17

Dated: 03-02-2017

Read the following:-

1. G.O.Ms.No.46, Finance (HRM.V-PC.I) Department, dated 30.04.2015.
2. G.O.Ms.No.51, Finance (HRM.VI-Pen) Department, dated 08.05.2015.
3. G.O.Ms.No.18, Finance (HR.VI-TFR) Department, dated 10.02.2016
4. G.O.Ms.No.173, Finance (HR.5-Pension, GPF) Dept dated 30.08.2016
5. G.O.Ms.No.16, Finance (HR.VI-TFR) Department dated 03.02.2017

ORDER:

Government hereby order the revision of rates of Dearness Relief to pensioners sanctioned in the G.O. 4th read above, raising it by 3.144% from **15.196% of the basic pension to 18.340% of the basic pension from 01.01.2016** in respect of:-

- (i) those who retired from service after 01.07.2013 and drawing pension in the Revised Pay Scales, 2015;
- (ii) those who retired prior to 01.7.2013 and whose pension was consolidated in the light of orders issued in the G.O. 2nd read above.

2. Government also hereby order the revision of rates of Dearness Relief from **88.168% to 93.304%** with effect from **01.01.2016** to the Pensioners who are drawing their pension in Revised Pay Scales, 2010 and not consolidated in terms of the orders issued in the reference 2nd read above.

3. Government also hereby order the revision of rates of Dearness Relief from **211.95 % to 222.312 %** with effect from **01.01.2016** to the Pensioners who are drawing their pension in Revised Pay Scales, 2005 and not consolidated in terms of the orders issued in G.O.Ms. No.100, Finance (Pen.I) Department, dated 06.04.2010.

4. Government also hereby order the revision of rates of Dearness Relief from **214.316 % to 223.314 %** with effect from **01.01.2016** to the Pensioners who are drawing their pension in Revised Pay Scales, 1999 and not consolidated in terms of the orders issued in G.O.(P) No.248, Finance (Pen.I) Department, dated 04.10.2005.

5. Government also hereby order the revision of rates of Dearness Relief in respect of pensioners who retired after 01.01.1996 drawing UGC Pay Scales 1996 from **234% to 245 %** with effect from **01.01.2016** since the Dearness Relief was regulated upto **01.01.2007** by merging 50% Dearness Relief with basic pension through G.O (P) No.183 Finance (Pen.I) Department dated 2.8.2007 based on the orders issued in G.O. (P) No.173 Finance (PC.I) Department dated 23.7.2007.

P.M

6. Government also hereby order the revision of rates of Dearness Relief to the pensioners who retired while drawing UGC Pay Scales 2006 from 01.01.2006 from **119%** to **125%** with effect from **01.01.2016**.

7. Government also hereby order the revision of rates of Dearness Relief to the pensioners/family pensioners whose pension was consolidated as per orders issued in G.O.Ms.No.54, Higher Education (UE.II) Department, dated 08.06.2011 and G.O.Ms.No.31, Higher Education (UE.II) Department, dated 24.05.2013 from **119%** to **125%** with effect from **01.01.2016**.

8. Government also hereby order the revision of rates of Dearness Relief sanctioned in G.O.Ms.No.4 Law (Law & J-SC.F) Department dated 06.01.2011 to the Pensioners who are drawing pension as per Justice E.Padmanabhan Committee report from **119%** to **125%** with effect from **01.01.2016**.

9. **These orders are applicable to:**

- (1) (a) All Government Pensioners in receipt of Service Pensions, Family Pensions under Revised Pension Rules, 1951, Andhra Pradesh Liberalised Pension Rules, 1961 and Andhra Pradesh Government Servants (Family Pension) Rules, 1964.
 - (b) Teaching and Non-Teaching pensioners of Municipalities, Panchayat Raj Institutions and Aided Educational Institutions, in receipt of pensions under the Andhra Pradesh Liberalised Pension Rules, 1961 and Andhra Pradesh Government Servants (Family Pension) Rules, 1964.
 - (c) Teaching and Non-Teaching staff in Aided Educational Institutions in receipt of pensions under the Contributory Provident Fund-cum-Pension and Gratuity Rules, 1961 and Andhra Pradesh Liberalised Pension Rules, 1961.
 - (d) Those drawing family pensions under G.O.Ms.No.22, Finance & Planning (FW: Pen.I) Department, dated 16.1.1971, G.O.Ms.No.104, Finance & Planning (FW: Pen.I) Department, dated 13.4.1973 and G.O.Ms.No.25, Finance & Planning (FW: Pen.I) Department, dated 2.2.1974.
 - (e) Pensioners in receipt of Compassionate Pension under the rules for Compassionate Pensions and Gratuities in the Hyderabad Civil Services Rules; and
 - (f) Those in receipt of Pensions under the Wound and Extraordinary Pension Rules.
- (2) Pensioners governed by Andhra Pradesh Revised Pension Rules, 1980.

10. **These orders are not applicable to the financial assistance grantees and others who are not entitled to Dearness Relief.**

11. Ready Reckoner showing the Dearness Relief payable to the State Pensioners in terms of these orders is annexed.

12. The Pension for March 2017, at the enhanced DR rates shall be payable in April 2017. **The arrears of the Revised Dearness Relief to Pensioners shall be paid along with the pension of March, 2017 payable in the month of April, 2017.**

13. All the Treasury Officers/ Pension Payment Officers shall work out and make payments of the Dearness Relief on Pension sanctioned in this order without waiting for further authorization/ instructions from the Accountant General (A&E), Andhra Pradesh, Hyderabad, in terms of the orders issued in the G.O.Ms.No.270, Finance & Planning (FW: PSC.I) Department, dated 7.10.1986.

14. All the Treasury Officers/Pension Payment Officers shall work out and make payments of the dearness relief on pension sanctioned in this order in terms of orders issued in G.O.ms.No.122, Finance(Pen.I)Department, Dt: 22.05.2014

15. The expenditure is allocable among the various States in accordance with provisions of Rule 24 of the Incidence of Pension Rules in Appendix III-B of the Andhra Pradesh Accounts Code, Volume-I.

16. In respect of the categories of employees who are not covered for payment through the Treasuries, the expenditure shall be debited to the Pension Funds of Zilla Parishads and Pension funds of the respective Municipal Councils.

17. In respect of the Pensioners of the Universities the expenditure on account of the Dearness Relief now sanctioned above shall be met from the Block Grants allotted to them.

18. The G.O is available on Internet and can be accessed at the address <http://goir.ap.gov.in>.

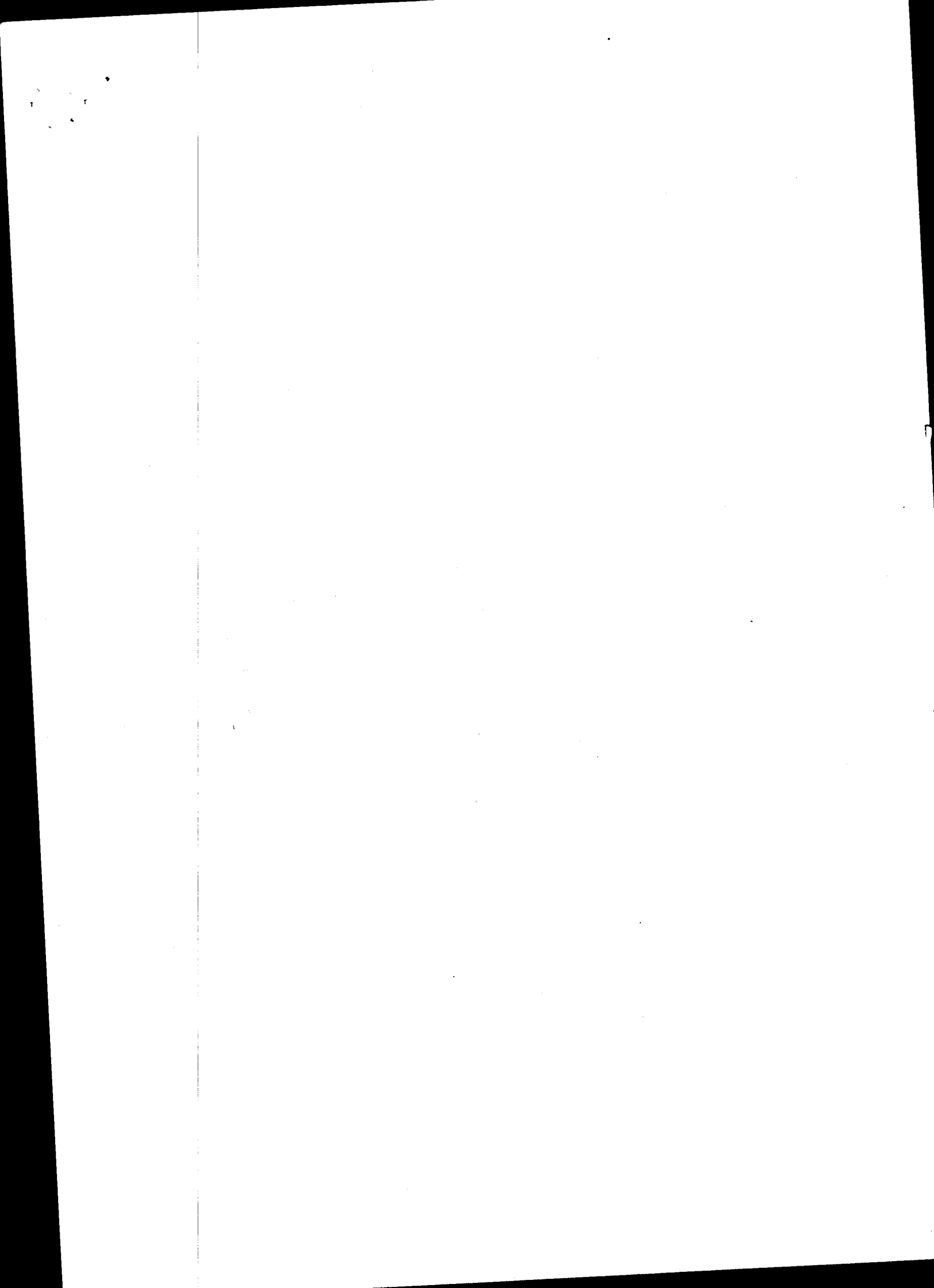
(BY ORDER IN THE NAME OF THE GOVERNOR OF ANDHRA PRADESH)
AJEYA KALLAM
SPECIAL CHIEF SECRETARY TO GOVERNMENT

To
All Departments of Secretariat.
All Heads of Departments.
The Director of Treasuries and Accounts, A.P. Ibrahimpatnam
The Director of State Audit, A.P. Ibrahimpatnam.
The Director of Works and Accounts, Ibrahimpatnam.
The Pay and Accounts Officer, Ibrahimpatnam.
The Andhra Pradesh Head quarters Treasury at Hyderabad in the office of the DTA, AP at Hyderabad.
The Accountant General (A&E) A.P & Telangana, Hyderabad.
The Principal Accountant General (G&SSA) A.P & Telangana, Hyderabad.
The Principal Accountant General (E&RSA) A.P& Telangana, Hyderabad.
The Accountant General of other states given below through A.G., A.P.
Hyderabad (500 copies)
The Accountant General Tamil nadu Chennai.
The Accountant General, Maharashtra, Mumbai.
The Accountant General, Gujarat.

The Accountant General (A&E) Kerala, P.N.No.5607 Tiruvananthapuram-695039.
The Accountant General (A&E) Karnataka, Bangalore.
The Accountant General (A&E), U.P., Allahabad.
The Accountant General (A&E), Haryana, Chandigarh.
The Accountant General (A&E), Punjab, Chandigarh.
The Accountant General (A&E), Rajasthan, Jaipur.
The Accountant General (A&E), Assam, Dispur.
The Accountant General (A&E), Bihar, Patna.
The Accountant General (A&E), Orissa, Bhubaneswar.
The Accountant General, (A&E-II), Madhya Pradesh, Gwalior.
The Accountant Officer (Pen.Co-Ordination), O/o the Principal Accountant
General (A&E) Calcutta, West Bengal.
The Secretary to Government, Finance Department, Secretariat, Chennai,
Tamilnadu.
The Secretary to Government, Finance Department, Secretariat, Trivandrum,
Kerala.
The Secretary to Government, Finance Department, Secretariat, Bhubaneshwar,
Orissa.
The Public Accounts Officer, Treasury, Pondicherry.
The Principal Secretary to Governor, Raj Bhavan, Hyderabad.(with a covering
letter)
The Registrar General, High Court of Andhra Pradesh & Telangana, Hyderabad
(with a covering letter)
The Registrar Lokayukta and UpaLokayukta, A.P. Hyderabad (with a covering
letter).
The Registrar, A.P. Administrative Tribunal, Hyderabad.(with a covering letter)
The Principal Secretary, Andhra Pradesh Public Service Commission, Hyderabad.
(with a covering letter)
The Managing Director, A.P. GENCO, VidyutSoudha, Hyderabad.(with a covering
letter)
The Managing Director, A.P.TRANSCO, VidyutSoudha, Hyderabad.(with a
covering letter)
All the District Collectors in Andhra Pradesh.
All the District Judges in Andhra Pradesh.
All the District Treasury Officers in Andhra Pradesh.
All the Chief Executive Officers of ZillaPrajaParishads in Andhra Pradesh.
All the District Panchayat Officers in Andhra Pradesh
All the District Educational Officers in Andhra Pradesh.
All the Commissioners/Special Officers of Municipalities/Municipal Corporations in
Andhra Pradesh.
The Registrars of all the Universities in Andhra Pradesh.
The Secretary Tungabhadra Project, Via. Hospet, Ballary District.
The Director of State Ports, Kakinada, East Godavari, A.P.,
All the Secretaries, Agricultural Market Committees through Commissioner &
Director of Agriculture Marketing (30 copies).
The Resident Commissioner, Andhra Pradesh Bhavan, Ashoka Road, New Delhi-
110 001.
The Pay & Accounts Officer, Government of Andhra Pradesh, New Delhi-110 001
All the Pensioners Associations in Andhra Pradesh.
SF/SCS.

//FORWARDED::BY ORDER//

SECTION OFFICER



ANNEXURE

to G.O.Ms.No.17, Finance (HRM-V-Pension,GPF) Department, Dated: 03-02-2017

Dearness Relief admissible on Pension/Family Pension with effect from 01-01-2016 (@ 18.340%)

Pension/F.P	D.R	Pension/F.P	D.R	Pension/F.P	D.R	Pension/F.P	D.R	Pension/F.P	D.R	Pension/F.P	D.R
6500 to 6504	1193	6898 to 6902	1266	7296 to 7301	1339	7694 to 7699	1412	8092 to 8097	1485	8490 to 8495	1558
6505 to 6510	1194	6903 to 6908	1267	7302 to 7306	1340	7700 to 7704	1413	8098 to 8102	1486	8496 to 8500	1559
6511 to 6515	1195	6909 to 6913	1268	7307 to 7311	1341	7705 to 7709	1414	8103 to 8108	1487	8501 to 8506	1560
6516 to 6521	1196	6914 to 6919	1269	7312 to 7317	1342	7710 to 7715	1415	8109 to 8113	1488	8507 to 8511	1561
6522 to 6526	1197	6920 to 6924	1270	7318 to 7322	1343	7716 to 7720	1416	8114 to 8118	1489	8512 to 8516	1562
6527 to 6532	1198	6925 to 6930	1271	7323 to 7328	1344	7721 to 7726	1417	8119 to 8124	1490	8517 to 8522	1563
6533 to 6537	1199	6931 to 6935	1272	7329 to 7333	1345	7727 to 7731	1418	8125 to 8129	1491	8523 to 8527	1564
6538 to 6543	1200	6936 to 6941	1273	7334 to 7339	1346	7732 to 7737	1419	8130 to 8135	1492	8528 to 8533	1565
6544 to 6548	1201	6942 to 6946	1274	7340 to 7344	1347	7738 to 7742	1420	8136 to 8140	1493	8534 to 8538	1566
6549 to 6554	1202	6947 to 6952	1275	7345 to 7350	1348	7743 to 7748	1421	8141 to 8146	1494	8539 to 8544	1567
6555 to 6559	1203	6953 to 6957	1276	7351 to 7355	1349	7749 to 7753	1422	8147 to 8151	1495	8545 to 8549	1568
6560 to 6564	1204	6958 to 6962	1277	7356 to 7361	1350	7754 to 7759	1423	8152 to 8157	1496	8550 to 8555	1569
6565 to 6570	1205	6963 to 6968	1278	7362 to 7366	1351	7760 to 7764	1424	8158 to 8162	1497	8556 to 8560	1570
6571 to 6575	1206	6969 to 6973	1279	7367 to 7371	1352	7765 to 7769	1425	8163 to 8167	1498	8561 to 8566	1571
6576 to 6581	1207	6974 to 6979	1280	7372 to 7377	1353	7770 to 7775	1426	8168 to 8173	1499	8567 to 8571	1572
6582 to 6586	1208	6980 to 6984	1281	7378 to 7382	1354	7776 to 7780	1427	8174 to 8178	1500	8572 to 8576	1573
6587 to 6592	1209	6985 to 6990	1282	7383 to 7388	1355	7781 to 7786	1428	8179 to 8184	1501	8577 to 8582	1574
6593 to 6597	1210	6991 to 6995	1283	7389 to 7393	1356	7787 to 7791	1429	8185 to 8189	1502	8583 to 8587	1575
6598 to 6603	1211	6996 to 7001	1284	7394 to 7399	1357	7792 to 7797	1430	8190 to 8195	1503	8588 to 8593	1576
6604 to 6608	1212	7002 to 7006	1285	7400 to 7404	1358	7798 to 7802	1431	8196 to 8200	1504	8594 to 8598	1577
6609 to 6614	1213	7007 to 7012	1286	7405 to 7410	1359	7803 to 7808	1432	8201 to 8206	1505	8599 to 8604	1578
6615 to 6619	1214	7013 to 7017	1287	7411 to 7415	1360	7809 to 7813	1433	8207 to 8211	1506	8605 to 8609	1579
6620 to 6624	1215	7018 to 7022	1288	7416 to 7420	1361	7814 to 7819	1434	8212 to 8217	1507	8610 to 8615	1580
6625 to 6630	1216	7023 to 7028	1289	7421 to 7426	1362	7820 to 7824	1435	8218 to 8222	1508	8616 to 8620	1581
6631 to 6635	1217	7029 to 7033	1290	7427 to 7431	1363	7825 to 7829	1436	8223 to 8227	1509	8621 to 8626	1582
6636 to 6641	1218	7034 to 7039	1291	7432 to 7437	1364	7830 to 7835	1437	8228 to 8233	1510	8627 to 8631	1583
6642 to 6646	1219	7040 to 7044	1292	7438 to 7442	1365	7836 to 7840	1438	8234 to 8238	1511	8632 to 8636	1584
6647 to 6652	1220	7045 to 7050	1293	7443 to 7448	1366	7841 to 7846	1439	8239 to 8244	1512	8637 to 8642	1585
6653 to 6657	1221	7051 to 7055	1294	7449 to 7453	1367	7847 to 7851	1440	8245 to 8249	1513	8643 to 8647	1586
6658 to 6663	1222	7056 to 7061	1295	7454 to 7459	1368	7852 to 7857	1441	8250 to 8255	1514	8648 to 8653	1587
6664 to 6668	1223	7062 to 7066	1296	7460 to 7464	1369	7858 to 7862	1442	8256 to 8260	1515	8654 to 8658	1588
6669 to 6673	1224	7067 to 7072	1297	7465 to 7470	1370	7863 to 7868	1443	8261 to 8266	1516	8659 to 8664	1589
6674 to 6679	1225	7073 to 7077	1298	7471 to 7475	1371	7869 to 7873	1444	8267 to 8271	1517	8665 to 8669	1590
6680 to 6684	1226	7078 to 7082	1299	7476 to 7480	1372	7874 to 7879	1445	8272 to 8277	1518	8670 to 8675	1591
6685 to 6690	1227	7083 to 7088	1300	7481 to 7486	1373	7880 to 7884	1446	8278 to 8282	1519	8676 to 8680	1592
6691 to 6695	1228	7089 to 7093	1301	7487 to 7491	1374	7885 to 7889	1447	8283 to 8287	1520	8681 to 8685	1593
6696 to 6701	1229	7094 to 7099	1302	7492 to 7497	1375	7890 to 7895	1448	8288 to 8293	1521	8686 to 8691	1594
6702 to 6706	1230	7100 to 7104	1303	7498 to 7502	1376	7896 to 7900	1449	8294 to 8298	1522	8692 to 8696	1595
6707 to 6712	1231	7105 to 7110	1304	7503 to 7508	1377	7901 to 7906	1450	8299 to 8304	1523	8697 to 8702	1596
6713 to 6717	1232	7111 to 7115	1305	7509 to 7513	1378	7907 to 7911	1451	8305 to 8309	1524	8703 to 8707	1597
6718 to 6723	1233	7116 to 7121	1306	7514 to 7519	1379	7912 to 7917	1452	8310 to 8315	1525	8708 to 8713	1598
6724 to 6728	1234	7122 to 7126	1307	7520 to 7524	1380	7918 to 7922	1453	8316 to 8320	1526	8714 to 8718	1599
6729 to 6733	1235	7127 to 7132	1308	7525 to 7530	1381	7923 to 7928	1454	8321 to 8326	1527	8719 to 8724	1600
6734 to 6739	1236	7133 to 7137	1309	7531 to 7535	1382	7929 to 7933	1455	8327 to 8331	1528	8725 to 8729	1601
6740 to 6744	1237	7138 to 7142	1310	7536 to 7540	1383	7934 to 7938	1456	8332 to 8337	1529	8730 to 8735	1602
6745 to 6750	1238	7143 to 7148	1311	7541 to 7546	1384	7939 to 7944	1457	8338 to 8342	1530	8736 to 8740	1603
6751 to 6755	1239	7149 to 7153	1312	7547 to 7551	1385	7945 to 7949	1458	8343 to 8347	1531	8741 to 8745	1604
6756 to 6761	1240	7154 to 7159	1313	7552 to 7557	1386	7950 to 7955	1459	8348 to 8353	1532	8746 to 8751	1605
6762 to 6766	1241	7160 to 7164	1314	7558 to 7562	1387	7956 to 7960	1460	8354 to 8358	1533	8752 to 8756	1606
6767 to 6772	1242	7165 to 7170	1315	7563 to 7568	1388	7961 to 7966	1461	8359 to 8364	1534	8757 to 8762	1607
6773 to 6777	1243	7171 to 7175	1316	7569 to 7573	1389	7967 to 7971	1462	8365 to 8369	1535	8763 to 8767	1608
6778 to 6783	1244	7176 to 7181	1317	7574 to 7579	1390	7972 to 7977	1463	8370 to 8375	1536	8768 to 8773	1609
6784 to 6788	1245	7182 to 7186	1318	7580 to 7584	1391	7978 to 7982	1464	8376 to 8380	1537	8774 to 8778	1610
6789 to 6793	1246	7187 to 7191	1319	7585 to 7590	1392	7983 to 7988	1465	8381 to 8386	1538	8779 to 8784	1611
6794 to 6799	1247	7192 to 7197	1320	7591 to 7595	1393	7989 to 7993	1466	8387 to 8391	1539	8785 to 8789	1612
6800 to 6804	1248	7198 to 7202	1321	7596 to 7600	1394	7994 to 7998	1467	8392 to 8397	1540	8790 to 8795	1613
6805 to 6810	1249	7203 to 7208	1322	7601 to 7606	1395	7999 to 8004	1468	8398 to 8402	1541	8796 to 8800	1614
6811 to 6815	1250	7209 to 7213	1323	7607 to 7611	1396	8005 to 8009	1469	8403 to 8407	1542	8801 to 8805	1615
6816 to 6821	1251	7214 to 7219	1324	7612 to 7617	1397	8010 to 8015	1470	8408 to 8413	1543	8806 to 8811	1616
6822 to 6826	1252	7220 to 7224	1325	7618 to 7622	1398	8016 to 8020	1471	8414 to 8418	1544	8812 to 8816	1617
6827 to 6832	1253	7225 to 7230	1326	7623 to 7628	1399	8021 to 8026	1472	8419 to 8424	1545	8817 to 8822	1618
6833 to 6837	1254	7231 to 7235	1327	7629 to 7633	1400	8027 to 8031	1473	8425 to 8429	1546	8823 to 8827	1619
6838 to 6843	1255	7236 to 7241	1328	7634 to 7639	1401	8032 to 8037	1474	8430 to 8435	1547	8828 to 8833	1620
6844 to 6848	1256	7242 to 7246	1329	7640 to 7644	1402	8038 to 8042	1475	8436 to 8440	1548	8834 to 8838	1621
6849 to 6853	1257	7247 to 7251	1330	7645 to 7649	1403	8043 to 8048	1476	8441 to 8446	1549	8839 to 8844	1622
6854 to 6859	1258	7252 to 7257	1331	7650 to 7655	1404	8049 to 8053	1477	8447 to 8451	1550	8845 to 8849	1623
6860 to 6864	1259	7258 to 7262	1332	7656 to 7660	1405	8054 to 8058	1478	8452 to 8456	1551	8850 to 8855	1624
6865 to 6870	1260	7263 to 7268	1333	7661 to 7666	1406	8059 to 8064	1479	8457 to 8462	1552	8856 to 8860	1625
6871 to 6875	1261	7269 to 7273	1334	7667 to 7671	1407	8065 to 8069	1480	8463 to 8467	1553	8861 to 8865	1626
6876 to 6881	1262	7274 to 7279	1335	7672 to 7677	1408	8070 to 8075	1481	8468 to 8473	1554	8866 to 8871	1627
6882 to 6886	1263	7280 to 7284	1336	7678 to 7682	1409	8076 to 8080	1482	8474 to 8478	1555	8872 to 8876	1628
6887 to 6892	1264	7285 to 7290	1337	7683 to 7688	1410	8081 to 8086	1483	8479 to 8484	1556	8877 to 8882	1629
6893 to 6897	1265	7291 to 7295	1338	7689 to 7693	1411	8087 to 8091	1484	8485 to 8489	1557	8883 to 8887	1630

Pension/F.P	D.R	Pension/F.P	D.R	Pension/F.P	D.R	Pension/F.P	D.R	Pension/F.P	D.R	Pension/F.P	D.R
11375 to 11379	2087	11789 to 11793	2163	12203 to 12208	2239	12618 to 12622	2315	13032 to 13037	2391	13447 to 13451	2467
11380 to 11385	2088	11794 to 11799	2164	12209 to 12213	2240	12623 to 12628	2316	13038 to 13042	2392	13452 to 13456	2468
11386 to 11390	2089	11800 to 11804	2165	12214 to 12219	2241	12629 to 12633	2317	13043 to 13048	2393	13457 to 13462	2469
11391 to 11395	2090	11805 to 11810	2166	12220 to 12224	2242	12634 to 12639	2318	13049 to 13053	2394	13463 to 13467	2470
11396 to 11401	2091	11811 to 11815	2167	12225 to 12230	2243	12640 to 12644	2319	13054 to 13058	2395	13468 to 13473	2471
11402 to 11406	2092	11816 to 11821	2168	12231 to 12235	2244	12645 to 12649	2320	13059 to 13064	2396	13474 to 13478	2472
11407 to 11412	2093	11822 to 11826	2169	12236 to 12241	2245	12650 to 12655	2321	13065 to 13069	2397	13479 to 13484	2473
11413 to 11417	2094	11827 to 11832	2170	12242 to 12246	2246	12656 to 12660	2322	13070 to 13075	2398	13485 to 13489	2474
11418 to 11423	2095	11833 to 11837	2171	12247 to 12251	2247	12661 to 12666	2323	13076 to 13080	2399	13490 to 13495	2475
11424 to 11428	2096	11838 to 11843	2172	12252 to 12257	2248	12667 to 12671	2324	13081 to 13086	2400	13496 to 13500	2476
11429 to 11434	2097	11844 to 11848	2173	12258 to 12262	2249	12672 to 12677	2325	13087 to 13091	2401	13501 to 13506	2477
11435 to 11439	2098	11849 to 11853	2174	12263 to 12268	2250	12678 to 12682	2326	13092 to 13097	2402	13507 to 13511	2478
11440 to 11444	2099	11854 to 11859	2175	12269 to 12273	2251	12683 to 12688	2327	13098 to 13102	2403	13512 to 13516	2479
11445 to 11450	2100	11860 to 11864	2176	12274 to 12279	2252	12689 to 12693	2328	13103 to 13108	2404	13517 to 13522	2480
11451 to 11455	2101	11865 to 11870	2177	12280 to 12284	2253	12694 to 12699	2329	13109 to 13113	2405	13523 to 13527	2481
11456 to 11461	2102	11871 to 11875	2178	12285 to 12290	2254	12700 to 12704	2330	13114 to 13118	2406	13528 to 13533	2482
11462 to 11466	2103	11876 to 11881	2179	12291 to 12295	2255	12705 to 12709	2331	13119 to 13124	2407	13534 to 13538	2483
11467 to 11472	2104	11882 to 11886	2180	12296 to 12301	2256	12710 to 12715	2332	13125 to 13129	2408	13539 to 13544	2484
11473 to 11477	2105	11887 to 11892	2181	12302 to 12306	2257	12716 to 12720	2333	13130 to 13135	2409	13545 to 13549	2485
11478 to 11483	2106	11893 to 11897	2182	12307 to 12311	2258	12721 to 12726	2334	13136 to 13140	2410	13550 to 13555	2486
11484 to 11488	2107	11898 to 11902	2183	12312 to 12317	2259	12727 to 12731	2335	13141 to 13146	2411	13556 to 13560	2487
11489 to 11494	2108	11903 to 11908	2184	12318 to 12322	2260	12732 to 12737	2336	13147 to 13151	2412	13561 to 13566	2488
11495 to 11499	2109	11909 to 11913	2185	12323 to 12328	2261	12738 to 12742	2337	13152 to 13157	2413	13567 to 13571	2489
11500 to 11504	2110	11914 to 11919	2186	12329 to 12333	2262	12743 to 12748	2338	13158 to 13162	2414	13572 to 13576	2490
11505 to 11510	2111	11920 to 11924	2187	12334 to 12339	2263	12749 to 12753	2339	13163 to 13167	2415	13577 to 13582	2491
11511 to 11515	2112	11925 to 11930	2188	12340 to 12344	2264	12754 to 12759	2340	13168 to 13173	2416	13583 to 13587	2492
11516 to 11521	2113	11931 to 11935	2189	12345 to 12350	2265	12760 to 12764	2341	13174 to 13178	2417	13588 to 13593	2493
11522 to 11526	2114	11936 to 11941	2190	12351 to 12355	2266	12765 to 12769	2342	13179 to 13184	2418	13594 to 13598	2494
11527 to 11532	2115	11942 to 11946	2191	12356 to 12361	2267	12770 to 12775	2343	13185 to 13189	2419	13599 to 13604	2495
11533 to 11537	2116	11947 to 11952	2192	12362 to 12366	2268	12776 to 12780	2344	13190 to 13195	2420	13605 to 13609	2496
11538 to 11543	2117	11953 to 11957	2193	12367 to 12371	2269	12781 to 12786	2345	13196 to 13200	2421	13610 to 13615	2497
11544 to 11548	2118	11958 to 11962	2194	12372 to 12377	2270	12787 to 12791	2346	13201 to 13206	2422	13616 to 13620	2498
11549 to 11554	2119	11963 to 11968	2195	12378 to 12382	2271	12792 to 12797	2347	13207 to 13211	2423	13621 to 13626	2499
11555 to 11559	2120	11969 to 11973	2196	12383 to 12388	2272	12798 to 12802	2348	13212 to 13217	2424	13627 to 13631	2500
11560 to 11564	2121	11974 to 11979	2197	12389 to 12393	2273	12803 to 12808	2349	13218 to 13222	2425	13632 to 13636	2501
11565 to 11570	2122	11980 to 11984	2198	12394 to 12399	2274	12809 to 12813	2350	13223 to 13227	2426	13637 to 13642	2502
11571 to 11575	2123	11985 to 11990	2199	12400 to 12404	2275	12814 to 12819	2351	13228 to 13233	2427	13643 to 13647	2503
11576 to 11581	2124	11991 to 11995	2200	12405 to 12410	2276	12820 to 12824	2352	13234 to 13238	2428	13648 to 13653	2504
11582 to 11586	2125	11996 to 12001	2201	12411 to 12415	2277	12825 to 12829	2353	13239 to 13244	2429	13654 to 13658	2505
11587 to 11592	2126	12002 to 12006	2202	12416 to 12420	2278	12830 to 12835	2354	13245 to 13249	2430	13659 to 13664	2506
11593 to 11597	2127	12007 to 12012	2203	12421 to 12426	2279	12836 to 12840	2355	13250 to 13255	2431	13665 to 13669	2507
11598 to 11603	2128	12013 to 12017	2204	12427 to 12431	2280	12841 to 12846	2356	13256 to 13260	2432	13670 to 13675	2508
11604 to 11608	2129	12018 to 12022	2205	12432 to 12437	2281	12847 to 12851	2357	13261 to 13266	2433	13676 to 13680	2509
11609 to 11614	2130	12023 to 12028	2206	12438 to 12442	2282	12852 to 12857	2358	13267 to 13271	2434	13681 to 13685	2510
11615 to 11619	2131	12029 to 12033	2207	12443 to 12448	2283	12858 to 12862	2359	13272 to 13277	2435	13686 to 13691	2511
11620 to 11624	2132	12034 to 12039	2208	12449 to 12453	2284	12863 to 12868	2360	13278 to 13282	2436	13692 to 13696	2512
11625 to 11630	2133	12040 to 12044	2209	12454 to 12459	2285	12869 to 12873	2361	13283 to 13287	2437	13697 to 13702	2513
11631 to 11635	2134	12045 to 12050	2210	12460 to 12464	2286	12874 to 12879	2362	13288 to 13293	2438	13703 to 13707	2514
11636 to 11641	2135	12051 to 12055	2211	12465 to 12470	2287	12880 to 12884	2363	13294 to 13298	2439	13708 to 13713	2515
11642 to 11646	2136	12056 to 12061	2212	12471 to 12475	2288	12885 to 12889	2364	13299 to 13304	2440	13714 to 13718	2516
11647 to 11652	2137	12062 to 12066	2213	12476 to 12480	2289	12890 to 12895	2365	13305 to 13309	2441	13719 to 13724	2517
11653 to 11657	2138	12067 to 12072	2214	12481 to 12486	2290	12896 to 12900	2366	13310 to 13315	2442	13725 to 13729	2518
11658 to 11663	2139	12073 to 12077	2215	12487 to 12491	2291	12901 to 12906	2367	13316 to 13320	2443	13730 to 13735	2519
11664 to 11668	2140	12078 to 12082	2216	12492 to 12497	2292	12907 to 12911	2368	13321 to 13326	2444	13736 to 13740	2520
11669 to 11673	2141	12083 to 12088	2217	12498 to 12502	2293	12912 to 12917	2369	13327 to 13331	2445	13741 to 13745	2521
11674 to 11679	2142	12089 to 12093	2218	12503 to 12508	2294	12918 to 12922	2370	13332 to 13337	2446	13746 to 13751	2522
11680 to 11684	2143	12094 to 12099	2219	12509 to 12513	2295	12923 to 12928	2371	13338 to 13342	2447	13752 to 13756	2523
11685 to 11690	2144	12100 to 12104	2220	12514 to 12519	2296	12929 to 12933	2372	13343 to 13347	2448	13757 to 13762	2524
11691 to 11695	2145	12105 to 12110	2221	12520 to 12524	2297	12934 to 12938	2373	13348 to 13353	2449	13763 to 13767	2525
11696 to 11701	2146	12111 to 12115	2222	12525 to 12530	2298	12939 to 12944	2374	13354 to 13358	2450	13768 to 13773	2526
11702 to 11706	2147	12116 to 12121	2223	12531 to 12535	2299	12945 to 12949	2375	13359 to 13364	2451	13774 to 13778	2527
11707 to 11712	2148	12122 to 12126	2224	12536 to 12540	2300	12950 to 12955	2376	13365 to 13369	2452	13779 to 13784	2528
11713 to 11717	2149	12127 to 12132	2225	12541 to 12546	2301	12956 to 12960	2377	13370 to 13375	2453	13785 to 13789	2529
11718 to 11723	2150	12133 to 12137	2226	12547 to 12551	2302	12961 to 12966	2378	13376 to 13380	2454	13790 to 13795	2530
11724 to 11728	2151	12138 to 12142	2227	12552 to 12557	2303	12967 to 12971	2379	13381 to 13386	2455	13796 to 13800	2531
11729 to 11733	2152	12143 to 12148	2228	12558 to 12562	2304	12972 to 12977	2380	13387 to 13391	2456	13801 to 13805	2532
11734 to 11739	2153	12149 to 12153	2229	12563 to 12568	2305	12978 to 12982	2381	13392 to 13397	2457	13806 to 13811	2533
11740 to 11744	2154	12154 to 12159	2230	12569 to 12573	2306	12983 to 12988	2382	13398 to 13402	2458	13812 to 13816	2534
11745 to 11750	2155	12160 to 12164	2231	12574 to 12579	2307	12989 to 12993	2383	13403 to 13407	2459	13817 to 13822	2535
11751 to 11755	2156	12165 to 12170	2232	12580 to 12584	2308	12994 to 12998	2384	13408 to 13413	2460	13823 to 13827	2536
11756 to 11761	2157	12171 to 12175	2233	12585 to 12590	2309	12999 to 13004	2385	13414 to 13418	2461	13828 to 13833	2537
11762 to 11766	2158	12176 to 12181	2234	12591 to 12595	2310	13005 to 13009	2386	13419 to 13424	2462	13834 to 13838	2538
11767 to 11772	2159	12182 to 12186	2235	12596 to 12600	2311	13010 to 13015	2387	13425 to 13429	2463	13839 to 13844	2539
11773 to 11777	2160	12187 to 12191	2236	12601 to 12606	2312	13016 to 13020	2388	13430 to 13435	2464	13845 to 13849	2540
11778 to 11783	2161	12192 to 12197	2237	12607 to 12611	2313	13021 to 13026	2389	13436 to 13440	2465	13850 to 13855	2541
11784 to 11788	2162	12198 to 12202	2238	12612 to 12617	2314	13027 to 13031	2390	13441 to 13446	2466</		